



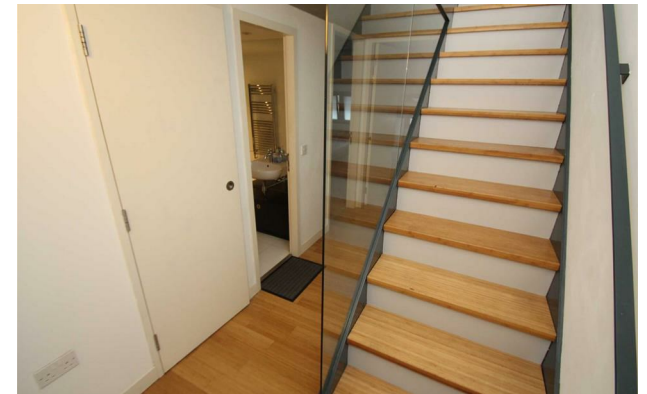
jordan fishwick

ALTRINCHAM
Woodfield Road



**Woodfield Road,
Altrincham, WA14 4RF**

£1,150 PCM



The Property

***** AVAILABLE FEBRUARY *** A MODERN SECOND FLOOR APARTMENT IN THE HIGHLY REGARDED BUDENBURG HAUS WITH UNDERCROFT PARKING.**

Accommodation comprises: Entrance Hall, Lounge/Diner with full length floor to ceiling windows leading on to a covered balcony, Kitchen area, two bedrooms and a family bathroom. The apartment is well equipped with stylish kitchen and bathrooms with hardwood bamboo flooring throughout the living areas. The property is located close to Altrincham Town Centre & Navigation Metro-link station.

Furnished. Please call to book a viewing 0161 929 9797.

Directions

WA14 4RF



- Two Bedroom Apartment
- Furnished
- Parking
- Close to Altrincham Centre
- Council Tax Band C
- EPC Rating - C

Postcode - WA14 4RF

EPC Rating - C

Floor Area - sq ft

Local Authority - Trafford Borough Council -
House Moving

Council Tax - C





These particulars are believed to be accurate but they are not guaranteed and do not form a contract. Neither Jordan Fishwick nor the vendor or lessor accept any responsibility in respect of these particulars, which are not intended to be statements or representations of fact and any intending purchaser or lessee must satisfy himself by inspection or otherwise as to the correctness of each of the statements contained in these particulars. Any floorplans on this brochure are for illustrative purposes only and are not necessarily to scale.

Offices at: Chorlton, Didsbury, Disley, Hale, Glossop, Macclesfield, Manchester Deansgate, Manchester Whitworth Street, New Mills, Sale, Wilmslow and Withington

01619291994

halemanagement@jordanfishwick.co.uk
www.jordanfishwick.co.uk